

PART NE 1/4 SEC. 5, T.6N., R.1W., S.L.B. & M.  
**MOUNTAIN VISTA PROFESSIONAL CENTER**  
 A CONDOMINIUM PROJECT

206

TAXING UNIT: 13

IN NORTH OGDEN CITY

SCALE 1"=20'

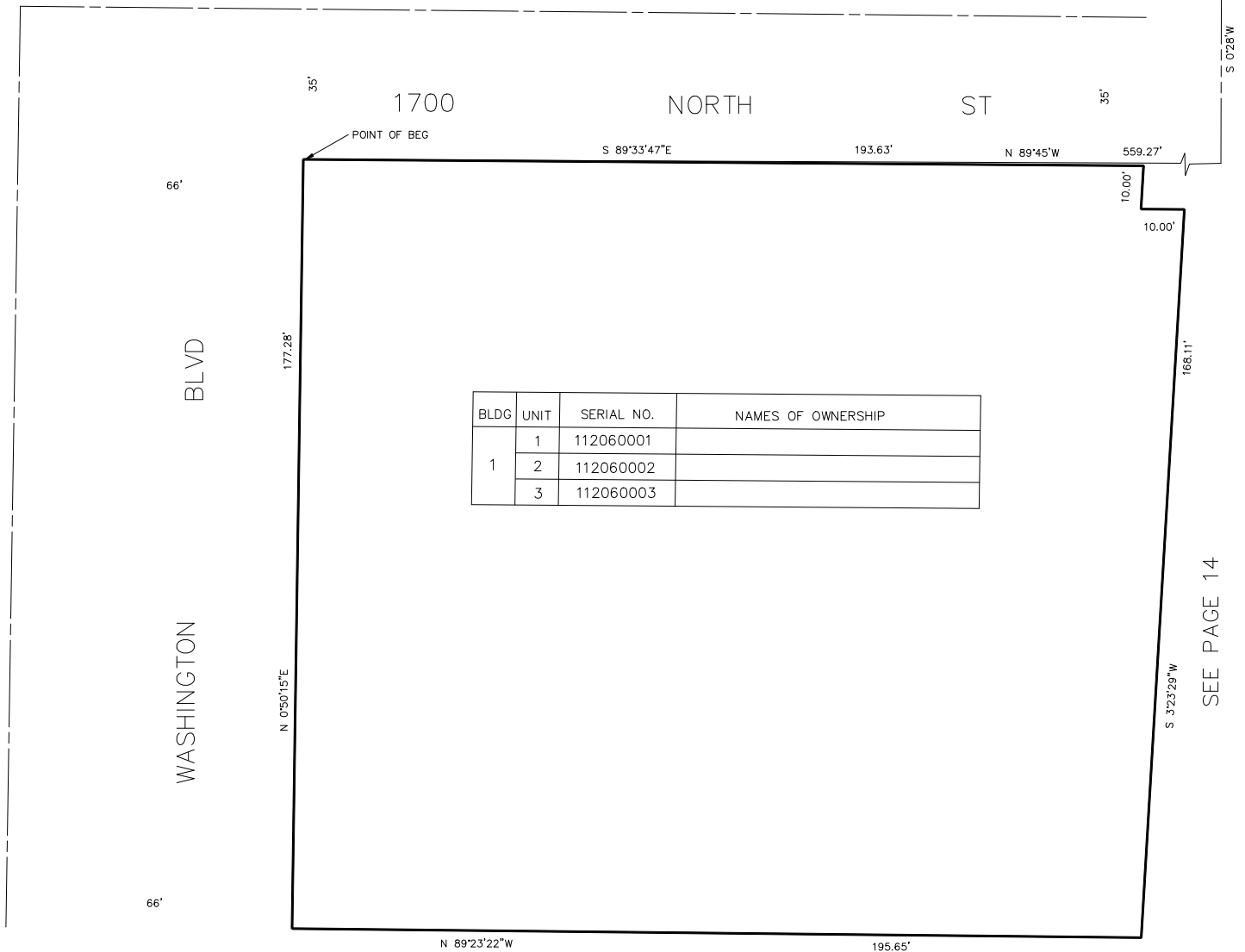
SURVEY PLAT BOOK 28 OF DEDICATION PLATS PAGE 86 & 87

NE COR SEC 5  
 T6N, R1W

SEE PAGE 14

SEE PAGE 14

SEE PAGE 14



BLDG	UNIT	SERIAL NO.	NAMES OF OWNERSHIP
1	1	112060001	
	2	112060002	
	3	112060003	

SEE PAGE 14